

Prediction of the Carbon nanotube quality using adaptive neuro-fuzzy inference system

Hassan Alijani¹; Shokoufe Tayyebi²; Zeinab Hajjar²; Zahra Shariatinia¹; Saeed Soltanali^{2*}

¹Department of Chemistry, Amirkabir University of Technology (Tehran Polytechnic), Tehran, Iran

²Research Institute of Petroleum Industry (RIPI), Tehran, Iran

Received 04 July 2017; revised 02 September 2017; accepted 07 September 2017; available online 11 September 2017

Abstract

Multi-walled carbon nanotubes (CNTs) are synthesized with the assistance of water vapor in a horizontal reactor using methane over Co-Mo/MgO catalyst through chemical vapor deposition method. The application of Adaptive Neuro-Fuzzy Inference System (ANFIS) technique for modeling the effect of important parameters (i.e. temperature, reaction time and amount of H₂O vapor) on the quality of the CNT process is investigated. Using experimental data, qualities of CNTs are determined for training, testing and validation of developed ANFIS model. From the analysis carried out by the ANFIS-based model, the mean square deviation and a regression coefficient are found to be 4.4% and 99%, respectively. The validation results confirm that the ability of the proposed ANFIS model for predicting the quality of the CNT process over a wide range of operational conditions. In addition, sensitivity analysis indicates that the temperature has the significant effect (i.e. 94%) on the quality of the CNT process.

Keywords: ANFIS Modeling; Carbon nanotube; Co-Mo/MgO catalyst; Nanomaterials; Raman spectroscopy.

How to cite this article

Alijani H, Tayyebi Sh, Hajjar Z, Shariatinia Z, Soltanali S. Prediction of the Carbon nanotube quality using adaptive neuro-fuzzy inference system. *Int. J. Nano Dimens.*, 2017; 8 (4): 298-306.

INTRODUCTION

Carbon nanotube (CNT) technology is developing very fast leading to decrease in the dimensions of devices used in today's technological applications, such as sensors, transistors, field emitters, flat panel displays, catalyst [1-4], etc. CNT is a tubular structure made of carbon atoms, having diameter of nanometer order but length in micrometers. This kind of structures was synthesized and studied by several researchers [5-10]. For the first time, Iijima's evaluated detailed analysis of helical arrangement of carbon atoms in 1991, proved to be a discovery report [11]. Since then, CNT has remained an exciting material ever. Its so-called extraordinary properties: many-fold stronger than steel, harder than diamond, electrical conductivity higher than copper, thermal conductivity higher than diamond, etc. The most common methods used for the production of CNTs are laser vaporization [12], arc discharge [13], and catalytic chemical vapor deposition (CVD) [14]. As compared to arc-

discharge and laser-ablation methods, CVD is a simple and economic technique for synthesizing CNTs. Arc- and laser-grown CNTs are superior to the CVD-grown ones in crystallinity, however, in yield and purity, CVD overcome the arc and laser methods. This method enables the use of various substrates, and allows CNT growth in a variety of forms, such as powder, thin or thick films, aligned or entangled, straight or coiled nanotubes, or a desired architecture of nanotubes on predefined sites of a patterned substrate [11]. Therefore Among several techniques of CNT synthesis available today, chemical vapor deposition (CVD) is most popular and widely used because of its ease of scale-up and low set-up cost, and particularly high production yield [11]. In addition to synthesis method, the properties of the CNTs are influenced with the different growth condition such as the feedstock pressure, the catalyst particle size, production temperature, and substrate properties and growth time [15-19]. Recent studies showed

* Corresponding Author Email: ssoltan@gmail.com

that 26-28 the diameter is increase with time due to expand of nanocrystalline carbon or glassy carbon sheath [17]. Also there were some reports indicating that the growth at higher temperatures yields thinner and longer CNTs in methane (CH_4) CVD [18].

Evaluate the effect of various growth conditions on the quality of the synthesized carbon nanotubes is difficult, costly and time consuming. Therefore, provide a good model to study the effects of different conditions on the quality of the synthesis of nanotubes is necessary. Most systems are extremely difficult and time demanding to model by accurate mathematical equations due to the complexity of the system structure, nonlinearity and uncertainty [20]. Hence, traditional modeling approaches are not usually capable of predicting system's performance correctly. Furthermore, intelligent techniques (i.e. neural network, fuzzy logic) are often practical for developing an accurate model without requiring any explicit mathematical representation [21, 22]. An adaptive neuro-fuzzy inference system (ANFIS) integrates fuzzy logic system with neural network to exploit the capability of each other. In fact, An ANFIS is constructed so that membership function parameters of the fuzzy system are tuned using the learning algorithms of the neural network. Therefore, the ANFIS architecture can successfully predict the nonlinear behavior of systems with acceptable accuracy [23].

Herein, we report the synthesis of CNTs through CVD method over Co-Mo/MgO catalyst, and methane as a carbon source. We focused on the

influence of the temperature, amount of H_2O , and reaction time on the quality (I_G/I_D) of CNTs. I_G/I_D is the intensity ratio of the Raman D-band to G-band is often used to estimate the density of structural defects in CNTs, providing a relative measure for the structural quality of a sample. Thus, in the current investigation, an adaptive neuro-fuzzy based inference system is employed to model the behavior of the CNTs quality (I_G/I_D) in presence of three input parameters (i.e. temperature, reaction time and amount of H_2O).

EXPERIMENTAL

Materials

Magnesium oxide, cobalt nitrate, and Ammonium heptamolybdate are all provided by the Merck Chemicals Inc. CH_4 gas is provided by Roham Gas Corporation.

Chemical Vapor Deposition (CVD)

Chemical vapor deposition (CVD) is the most popular method of producing CNTs nowadays. In this process, thermal decomposition of a hydrocarbon vapor is achieved in the presence of a metal catalyst. The simple schematic of CVD set up is shown in Fig. 1.

Catalyst preparation

The catalyst was prepared by loading %10 wt of Co and %2 wt of Mo on MgO as support. In a typical route, appropriate amounts of $\text{Co}(\text{NO}_3)_3$ and $(\text{NH}_4)_6\text{Mo}_7\text{O}_{24}$ were dissolved in 100 ml of methanol and 1 g of substrate was added to this solution.

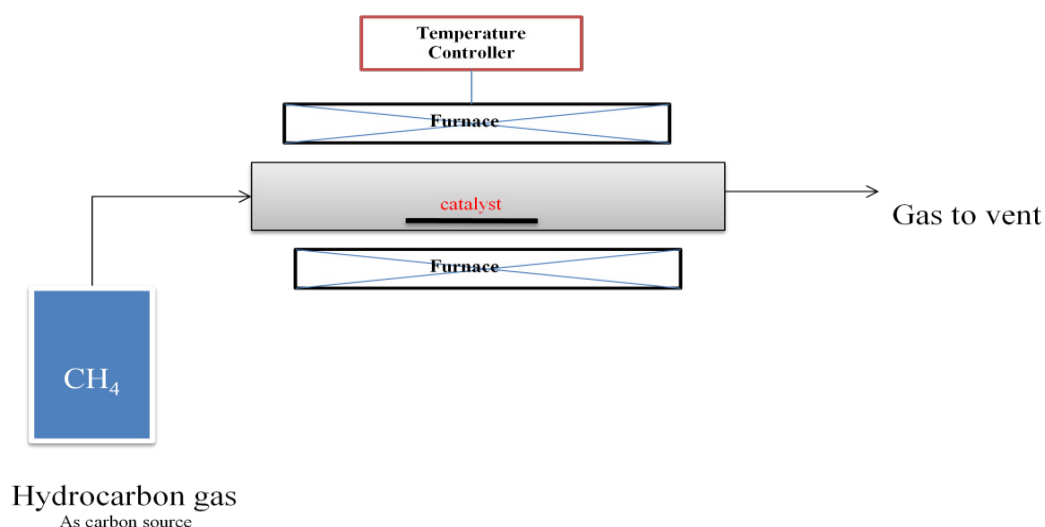


Fig.1: Schematic diagram of a CVD set up.

The final mixture was stirred for 2 h and then the solvent was evaporated by rotary and finally dried at 140 °C for 8 h. The final product was calcined at 450 °C for 5 h. CNTs synthesis was carried out using a controlled amount of water vapor in a fixed bed flowed reactor, which was composed of a ceramic boat containing 0.4 g of the catalyst placed in a horizontal quartz tube. After purging with argon for 30 min, the methane stream was opened for 1-30 min with the rate of 50 ml/min. The decomposition of methane was carried out at 850-1200°C.

Characterization

The synthesized sample was characterized through the TEM (apparatus model: Zeiss EM 900), SEM (apparatus model: ZEISS, SIGMA Series equipment), Raman spectrometer (apparatus model: SENTERRA- BRUKER (Germany)), and XRD (apparatus model: Siemens, model D5000).

Adaptive neuro-fuzzy inference system (ANFIS)

An adaptive neuro-fuzzy inference system (ANFIS) is a hybrid intelligent system which uses the learning ability of the neural network with the knowledge representation of the fuzzy logic [24]. The architecture of ANFIS model with 2 inputs (x_1 and x_2) and one output (φ) is shown in Fig. 2.

As can be seen from Fig. 2, the ANFIS architecture contains of five layers feed forward neural network which are explained as follows:

- First layer

This layer is named as an input layer. Each neuron in this layer saves the parameters of the membership function and crisp inputs are converted to membership degree values which change between 0 and 1. The output signals of this layer are calculated by:

$$O_k^1 = \mu_i(x_j) \quad i = 1,2,\dots,I \quad j = 1,2,\dots,N \quad k = 1,2,\dots,N \times I \quad (1)$$

where, μ is the membership degree. As can be seen in equation (1), the number of neurons in this layer is equal to the product of number of inputs (N) and number of fuzzy rules (I).

- Second layer

Each neuron of this layer performs a connective operation (i.e. "AND") to calculate the firing strength of a rule. The number of neurons in this layer is equal to the number of fuzzy rules.

$$O_k^2 = W_k = \prod_{j=1}^N \mu_k(x_j) \quad k = 1,2,\dots,I \quad (2)$$

- Third layer

A normalization process is performed by the neurons of this layer. The normalized firing strength is calculated by:

$$O_k^3 = \frac{W_k}{\sum W_k} = \bar{W}_k \quad k = 1,2,\dots,I \quad (3)$$

- Fourth layer

The normalized firing strength is multiplied by a linear combination of the inputs (i.e. Takagi–Sugeno fuzzy rule) in order to obtain a rules layer.

$$O_k^4 = \bar{W}_k(p_k x + q_k y + r_k) \quad k = 1,2,\dots,I \quad (4)$$

Where, p_k, q_k and r_k are adaptive parameters of this layer and are called as consequent parameters.

- Fifth layer

The last layer of the network is the weighted average of the outputs of fourth layer [25].

$$O^5 = \varphi = \sum_k O_k^4 \quad k = 1,2,\dots,I \quad (5)$$

All the above computation of the ANFIS model is performed by using MATLAB Fuzzy Logic Toolbox.

Statistical analysis

Two statistical criteria including correlation coefficient (R^2) and mean square deviation (MSD) are employed for assessing the performance of the developed model in this study. These are defined as:

$$R^2 = \frac{\sum_{i=1}^N (V_{exp,i} - \bar{V}_{exp})^2 - \sum_{i=1}^N (V_{cal,i} - V_{exp,i})^2}{\sum_{i=1}^N (V_{exp,i} - \bar{V}_{exp})^2} \quad (6)$$

$$MSD = \sqrt{\frac{1}{N} \sum_{i=1}^N (V_{cal,i} - V_{exp,i})^2} \quad (7)$$

Where, N is the number of data point and V_{calc} and V_{exp} denote the output value of the model and experimental data, respectively. \bar{V}_{exp} is the mean value of the experimental data. The perfect agreement is achieved when R^2 and RMSD are equal to 1 and 0, respectively.

RESULTS AND DISCUSSIONS

Characteristic properties

XRD analysis was obtained to investigate the crystallinity and structure of the samples. Fig. 3a exhibits the XRD pattern of the Co-Mo/MgO catalyst after growth of CNTs. Since MgO and CoO have a similar ionic radius, the diffraction peak of CoO could be masked by the peaks of MgO. In addition, one XRD peak appears for the CNT at $2\theta=26$ in the XRD pattern. It can be concluded that

the peak of CNT is overlapped by corresponding peak of $\text{Co}_2\text{Mo}_3\text{O}_8$. The Raman technique is used in qualitative and quantitative analysis of carbon nanotubes.

The grown CNT were then characterized by Raman spectroscopy as shown in Fig. 3b. The Raman spectrum consists of in plane bond stretching motion of pairs of sp^2 hybridized carbon atoms due to the disordered graphite around 1580 cm^{-1} (G mode) and radial breathing modes of A_{1g} symmetry owing to the presence of six fold aromatic rings (two-dimensional hexagonal lattice) at 1320 cm^{-1} (D mode). I_G/I_D ratio reflects

the quality of the as synthesized CNTs. Results of Raman spectroscopy showed that the highest quality of nanotubes were obtained at $1000\text{ }^\circ\text{C}$, %1 moisture, 50 ml/min of methane flow and 20 minutes.

The SEM image of prepared composite is indicated in Fig. 4a. The image displays multi-walled nanotubes are produced and their length is within the range of 2 to 6 micrometers. Moreover, the TEM image (Fig. 4b) established that the synthesized CNTs are multi-walled fragments with each tube consisting of 2–3 layers and diameters in the range of 20–60 nm.

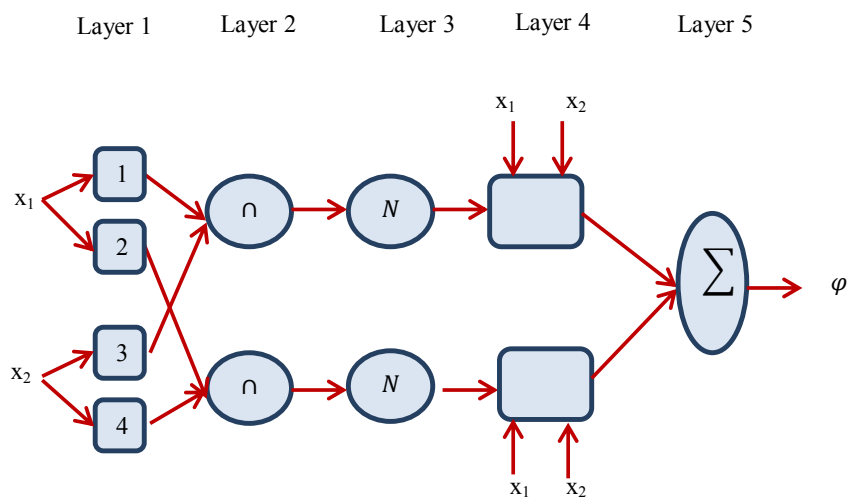


Fig. 2: Schematic architecture of ANFIS model with two fuzzy rules for two inputs and one output.

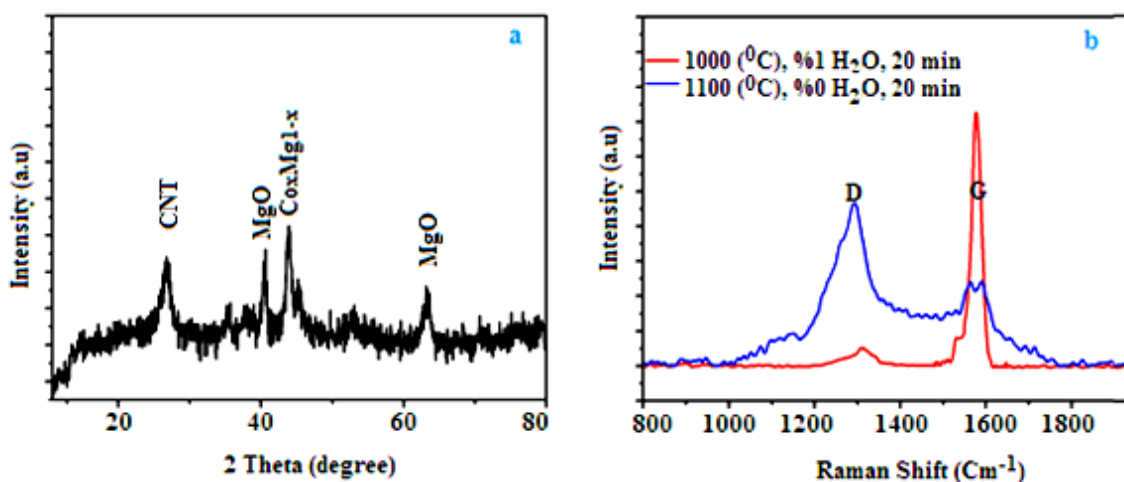


Fig. 3: a) XRD patterns of CNTs/ catalyst at $1000\text{ }^\circ\text{C}$, b) The Raman spectra analysis for prepared composite at 1000 and $1100\text{ }^\circ\text{C}$.

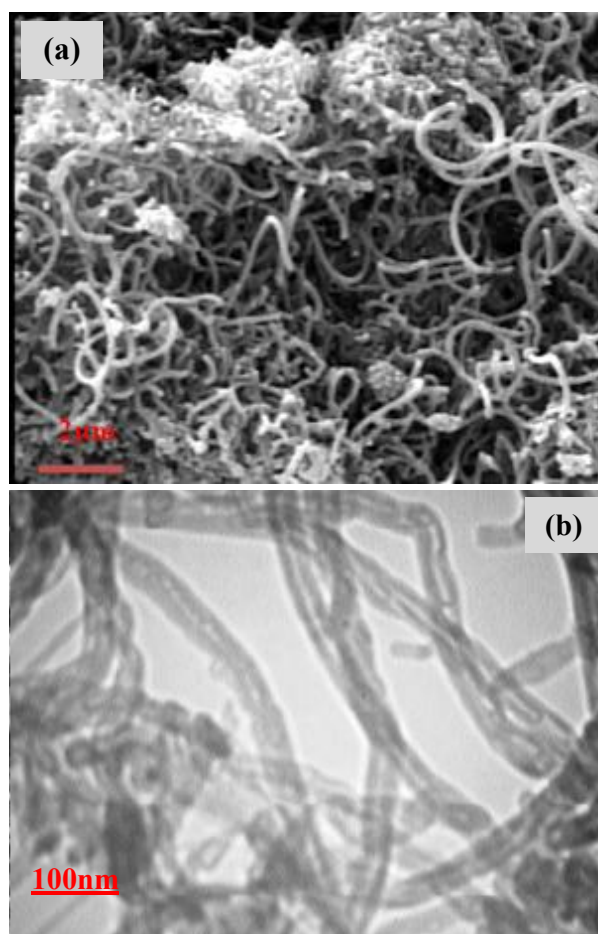


Fig. 4: (a) SEM micrograph, (b) TEM image for prepared CNTs at 1000°C, %1 water vapor and 20 min.

Development of ANFIS model

In the modeling study, the experimental data consists of 120 sets which are randomly divided into training (60%), testing (20%) and validation (20%) subsets. Each input of the ANFIS structure contains three fuzzy sets with Gaussian membership function. This function is determined according to the following equation:

$$\mu(x) = \exp\left[-0.5\left(\frac{x-c}{\sigma}\right)^2\right] \quad (8)$$

Where μ is the degree of the membership function and c, σ are parameters of the membership function. Since several orders of magnitude for input and output variables make the training extremely difficult and increase the learning time, experimental data are normalized between 0.1 and 0.9 by using the following equation:

$$x_{norm} = 0.8 \frac{x - x_{min}}{x_{max} - x_{min}} + 0.1 \quad (9)$$

In the above equation, x , x_{norm} , x_{min} and x_{max} indicate the experimental, normalized, minimum and maximum values of data, respectively.

The parameters of these membership functions are given in Table 1. In addition, the some rules used for modeling system as well as the respective membership functions are reported in Table 2.

As mentioned previously, the temperature, the time and the humidity are considered as input variables whereas the output variable is the quality (I_G/I_D) in this investigation.

Performance of ANFIS model

The regression analysis is performed to compare between testing data and predicted values from the proposed ANFIS model (Fig. 5). Obviously, the predicted quality (I_G/I_D) values of CNTs agree with the experimental data quite well with an acceptable correlation coefficient R^2 (0.993).

In order to validate the ANFIS model, the

Table 1: Fuzzy rule base of Takagi-Sugeno type ANFIS model.

Membership functions	Input 1(Temperature)		Input 2 (Time)		Input 3(Amount of H ₂ O)	
	c	σ	c	σ	c	σ
MF1	0.1871	4.2318	1.386	0.1792	3.2105	0.0879
MF2	0.1882	4.1879	1.423	0.1839	3.4812	0.1185
MF3	0.1905	3.9741	1.684	0.1239	3.5679	0.1205

Table 2: Parameters of Gaussian membership functions (MF1-MF3) for the optimum ANFIS model.

Rule number	Description of fuzzy rule	
1	If In1 is MF1 and In2 is MF2 and In3 is MF2 Then	quality=10.23*In1+2.87*In2-1.03*In3+1.02
2	If In1 is MF2 and In2 is MF3 and In3 is MF2 Then	quality=8.41*In1+0.74*In2+0.23*In3+2.18
3	If In1 is MF2 and In2 is MF2 and In3 is MF3 Then	quality=11.01*In1-0.21*In2+2.17*In3-2.79
4	If In1 is MF3 and In2 is MF3 and In3 is MF1 Then	quality=9.23*In1+1.14*In2-0.71*In3+2.19
5	If In1 is MF1 and In2 is MF1 and In3 is MF3 Then	quality=7.21*In1-4.21*In2+3.11*In3+0.86

values of quality (I_G/I_D) predicted by ANFIS model and experiments with respect to time in various temperatures in the presence of 1% and 2% of H₂O vapor are compared in Fig. 6 (a and b), respectively.

The degree of graphitic crystallinity in the CNT can be estimated qualitatively by calculating the ratio of I_G/I_D where the higher the intensity ratio, the greater the degree of graphitic crystallinity. The highest values of I_G/I_D obtained for CNT synthesized at various temperatures at the 20 min synthesis time are indicated that the growth of tubes at this synthesis times is less defective as compared to those grown at other synthesis time. From I_G/I_D calculation, the CNT synthesized at 900-1000°C has the highest ratio of I_G/I_D . This is indicated that the CNTs synthesized at 900-1000°C have better graphite structure than those synthesized at lower and higher synthesis temperatures. The formation of metal carbide that favor high temperature also leads to the lower graphitization of the CNT produced at higher temperature of 1000 °C.

These proposed results Correspond with other experimental studies [26]. The growth mechanism of CNTs in CVD has been widely studied. As generally accepted, CNTs are formed by carbon atom dissolving, diffusing, and precipitating through the catalyst droplets in CVD process [27-29]. The dissolving, diffusing and precipitating rates of the carbon atoms are affected by the carbon atom concentration, the temperature and the time of reaction.

At lower temperature, the dissolving and diffusing rates are limited by the low concentration of carbon and with the increase of the temperature; the dissolving and diffusing rates of carbon atoms will increase [26]. In addition, the quality decrease of CNTs with temperatures higher than 1000°C can be explained from two points. First, if the temperature is too high, the chemical reaction between carbon and Co-Mo/MgO catalyst may take place to form Co-Mo carbide leads to lose its catalytic activity for growing CNTs. The Second aspect, the high carbon concentration resulted from high temperature may cause the dissolving rate higher than diffusing and precipitating rates, carbon atoms will accumulate on the surface of catalysts to form a carbon shell, as a result, the catalysts lose their catalytic activity and lead to the lower graphitization of the CNT [26]. Thus, 900-1000 °C is the optimum range of temperatures to obtain high quality CNT. MSD from data of Fig. 6 (a and b) is determined 4.4% and this value indicated a significant prediction for the quality (I_G/I_D) of CNT process. In order to evaluate the effectiveness of the input parameters on the quality (I_G/I_D) of the CNT process, sensitivity analysis is also conducted. Accordingly, the sensitivity of each input is defined as:

$$Sensitivity = \left| \frac{\% \text{ change in output}}{\% \text{ change in input}} \right| * 100 \quad (10)$$

During the analysis of sensitivity, an input is changed between the mean values \pm one

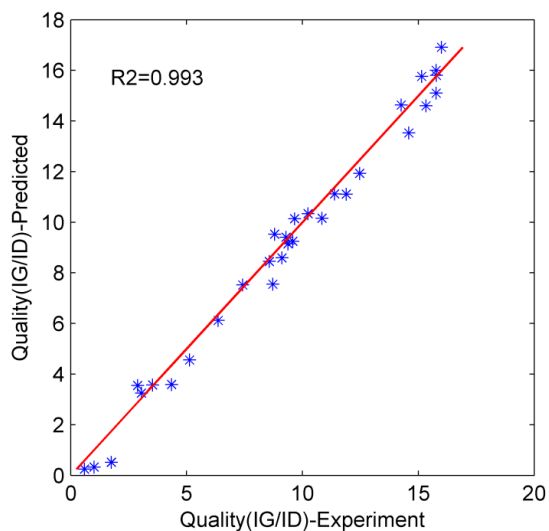


Fig. 5: Comparison of the testing data and predicted result via ANFIS.

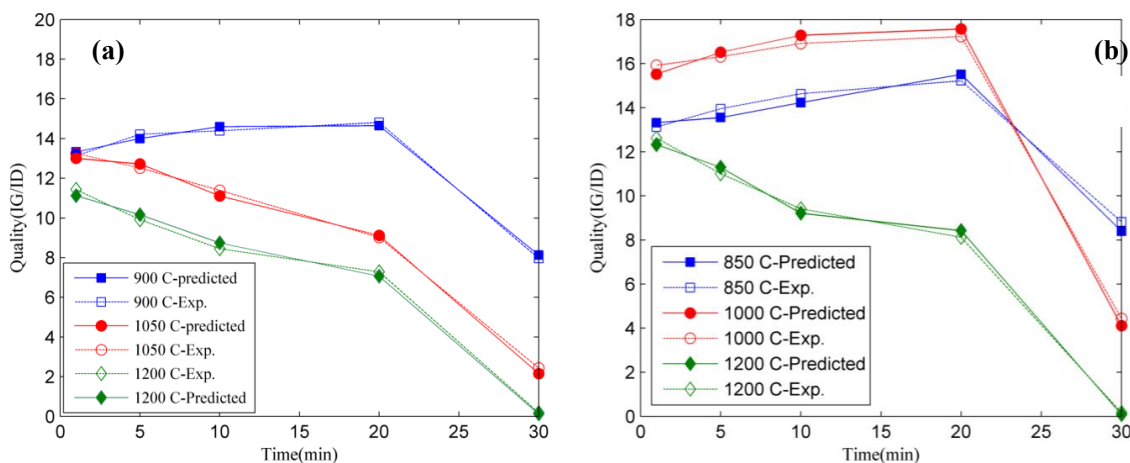


Fig. 6: Quality (IG/ID) with regard to reaction time in various temperatures a) in the presence of 1% of H₂O vapor, b) in the presence 2% of H₂O vapor.

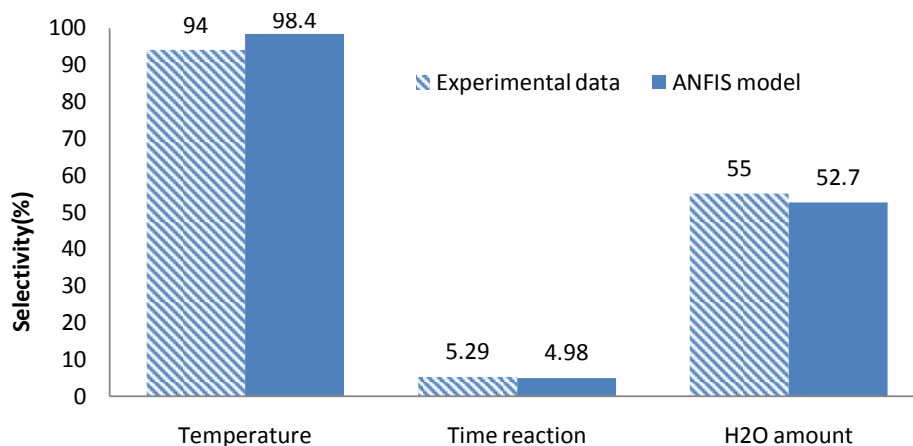


Fig. 7: Sensitivity analysis based on the ANFIS model and the experimental data.

standard deviation, whereas other inputs are held constant at their mean values [30]. Input variables sensitivities on the CNT quality based on the experimental data and the proposed ANFIS model are shown as a graphical bar in Fig. 7. As shown in Fig. 7, the sensitivity results of the developed ANFIS model are similar to the experimental data, with the percent error of less than 5.86%. In addition, the temperature has the maximum percentage effect (94%) on the quality in comparison with other inputs.

CONCLUSIONS

The present study demonstrates the quality variation of CNTs grown by CVD of methane on Co-Mo/MgO catalyst at 850-1200 °C for 1-30 min in the presence of 0-2% of H₂O vapor. This study is carried out to investigate the applicability of an adaptive neuro-fuzzy based inference system (ANFIS) approach for modeling the quality of CNTs. This technique is utilized to achieve relationship between three main parameters namely the temperature, the reaction time, and the amount of H₂O as well as an output variable, the quality. Results of the ANFIS model illustrate a very good agreement with the measured values for the quality (I_G/I_D) of CNTs ($R^2=0.99$). The sensitivity analysis of ANFIS model parameters indicates that the temperature is the most sensitive to the quality of the CNT process.

CONFLICT OF INTEREST

The authors declare that there is no conflict of interests regarding the publication of this manuscript.

REFERENCES

- [1] Ziabari S. A. S., Saravani M. G. T., (2017), A novel lightly doped drain and source Carbon nanotube field effect transistor (CNTFET) with negative differential resistance. *Int. J. Nano Dimens.* 8: 107-113.
- [2] Monshipouri M., Behrooz M., Abdi Y., (2017), Modified NEGF method for atomistic modeling of field emission from carbon nanotube. *Phys. Lett. A.* 381: 2959-2964.
- [3] Tripathi A. K., Jain V., Saini K., Lahiri I., (2017), Field emission response from multi-walled carbon nanotubes grown on electrochemically engineered copper foil. *Mat. Chem. Phys.* 187: 39-45.
- [4] Kamalian M., Abbasi A., Jalili Y. S., (2016), Electrical and optical properties of a small capped (5, 0) zigzag Carbon nanotube by B, N, Ge and Sn atoms: DFT theoretical calculation. *Int. J. Nano Dimens.* 7: 329-335.
- [5] Iijima S., (1991), Microtubules of graphitic carbon. *Nature.* 354: 56-58.
- [6] Baird T., Fryer J. R., Grant B., (1974), Carbon formation on iron and nickel foils by hydrocarbon pyrolysis-reactions at 700 °C. *Carbon.* 12: 591-602.
- [7] Baker R. T. K., Barber M. A., Harris P. S., Feates F. S., Waite R. J., (1972), Nucleation and growth of carbon deposits from the Nickel catalyzed decomposition of acetylene. *J. Catal.* 26: 51-62.
- [8] Baker R. T. K., Waite R. J., (1975), Formation of carbonaceous deposit from the platinum-iron catalyzed decomposition of acetylene. *J. Catal.* 37: 101-105.
- [9] Oberlin A., Endo M., Koyama T., (1976), Filamentous growth of carbon through benzene decomposition. *J. Cryst. Growth.* 32: 335-349.
- [10] Raghubanshi H., Dikio E. D., (2015), Synthesis of helical carbon fibers and related materials: A review on the past and recent developments. *Nanomaterials.* 5: 937-968.
- [11] Kumar M., Ando Y., (2010), Chemical vapor deposition of carbon nanotubes: A review on growth mechanism and mass production. *J. Nanosci. Nanotechnol.* 10: 3739-3758.
- [12] Thess A., Lee R., Nikolaev P., Dai H. J., Petit P., Robert J., (1996), Crystalline ropes of metallic carbon nanotubes. *Science.* 273: 483-487.
- [13] Berkman J., Jagannatham M., Rohit D., Haridoss P., (2015), Synthesis of thin bundled single walled carbon nanotubes and nanohorn hybrids by arc discharge technique in open air atmosphere. *Diamond and Related Materials.* 55: 12-15.
- [14] Alijani H., Beyki H. M., Shariatnia Z., Bayat M., Shemirani F., (2014), A new approach for one step synthesis of magnetic carbon nanotubes/diatomite earth composite by chemical vapor deposition method: Application for removal of lead ions. *Chem. Eng. J.* 253: 456-463.
- [15] Lee C. J., Park J., Huh Y., Lee J. Y., (2001), Temperature effect on the growth of carbon nanotubes using thermal chemical vapor deposition. *Chem. Phys. Lett.* 343: 33-38.
- [16] Bandow S., Asaka S., Saito Y., Rao A. M., Grigorian L., Richter E. M., Eklund P. C., (1998), Effect of the growth temperature on the diameter distribution and chirality of single-wall carbon nanotubes. *Phys. Rev. Lett.* 80: 3779-3782.
- [17] Kaatz F. H., Siegal M. P., Overmyer D. L., Provencio P. P., Tallant D. R., (2006), Thermodynamic model for growth mechanisms of multiwall carbon nanotubes. *Appl. Phys. Lett.* 89: 241915-241915.
- [18] Makris T. D., Giorgi L., Giorgi R., Lisi N., Salernitano E., (2005), CNT growth on alumina supported nickel catalyst by thermal CVD. *Diamond Relat. Mater.* 14: 815-819.
- [19] Bolton K., Ding F., Rosén A. J., (2006), Atomistic simulations of catalyzed carbon nanotube growth. *Nanosci. Nanotechnol.* 6: 1211-1224.
- [20] Hayati M., Rezaei A., Seifi M., (2010), CNT-MOSFET modeling based on artificial neural network: Application to simulation of nanoscale circuits. *Solid-State Electron.* 54: 52-57.
- [21] Amani-Ghadim A. R., Seyed Dorraji M. S., (2015), Modeling of photocatalytic process on synthesized ZnO nanoparticles: Kinetic model development and artificial neural networks. *Appl. Catal. B.* 163: 539-546.
- [22] Soltanali S., Halladj R., Tayyebi Sh., Rashidi A. M., (2014), Neural network and genetic algorithm for modeling and optimization of effective parameters on synthesized ZSM-5 particle size. *Mater. Lett.* 136: 138-140.
- [23] Ruano A. E., (2005), Intelligent control systems using computational intelligence techniques. IEE Control Engineering Series, IEE/IET, London, 70.
- [24] Akkaya E., (2016), ANFIS based prediction model for biomass heating value using proximate analysis components. *Fuel.* 180: 687-693.
- [25] Yang L., Entchev E., (2014), Performance prediction of a

- hybrid microgeneration system using adaptive neuro-fuzzy inference system (ANFIS) technique. *Appl. Energy*. 134: 197-203.
- [26] Li W. Z., Wen J. G., Ren Z. F., (2002), Effect of temperature on growth and structure of carbon nanotubes by chemical vapor deposition. *Appl. Phys. A*. 74: 397-402.
- [27] Li W. Z., Wen J. G., Ren Z. F., (2001), Effect of gas pressure on the growth and structure of carbon nanotubes by chemical vapor deposition. *Appl. Phys. A*. 73: 259-264.
- [28] Wagner R. S., Ellis W. C., (1964), Vapor-liquid-solid mechanism of single crystal growth. *Appl. Phys. Lett.* 4: 89-90.
- [29] Baker R. T. K, (1989), Catalytic growth of carbon filaments. *Carbon*. 27: 315-323.
- [30] Li Sh., Yang B., Qi F., (2016), Accelerate global sensitivity analysis using artificial neural network algorithm: Case studies for combustion kinetic model. *Combustion and Flame*. 168: 53-64.